

WESLEY

MADE BY JOHANNIUS

SCHMATIC DIAGRAMS

MODERATO

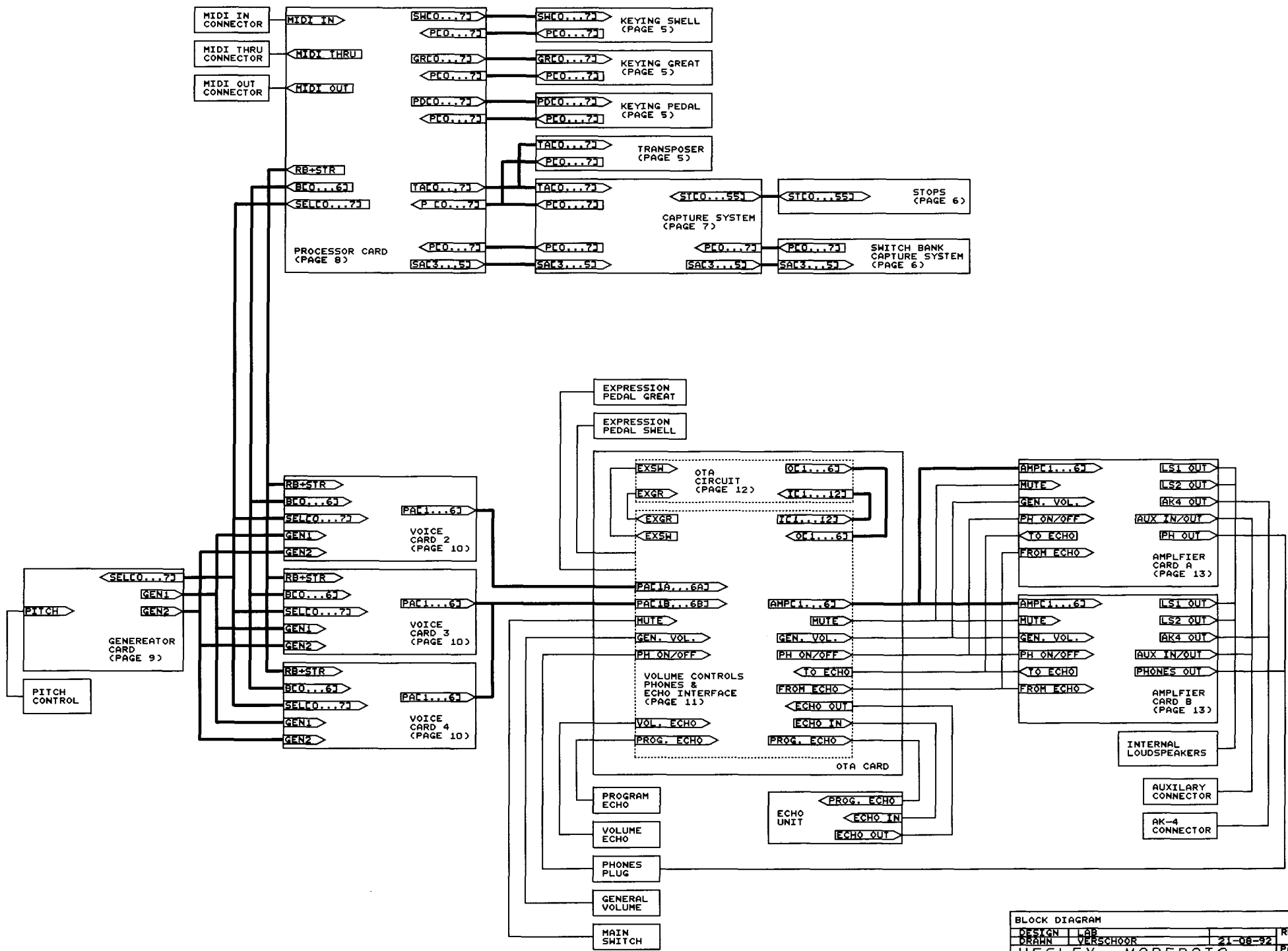
ALTERATIONS RESERVED

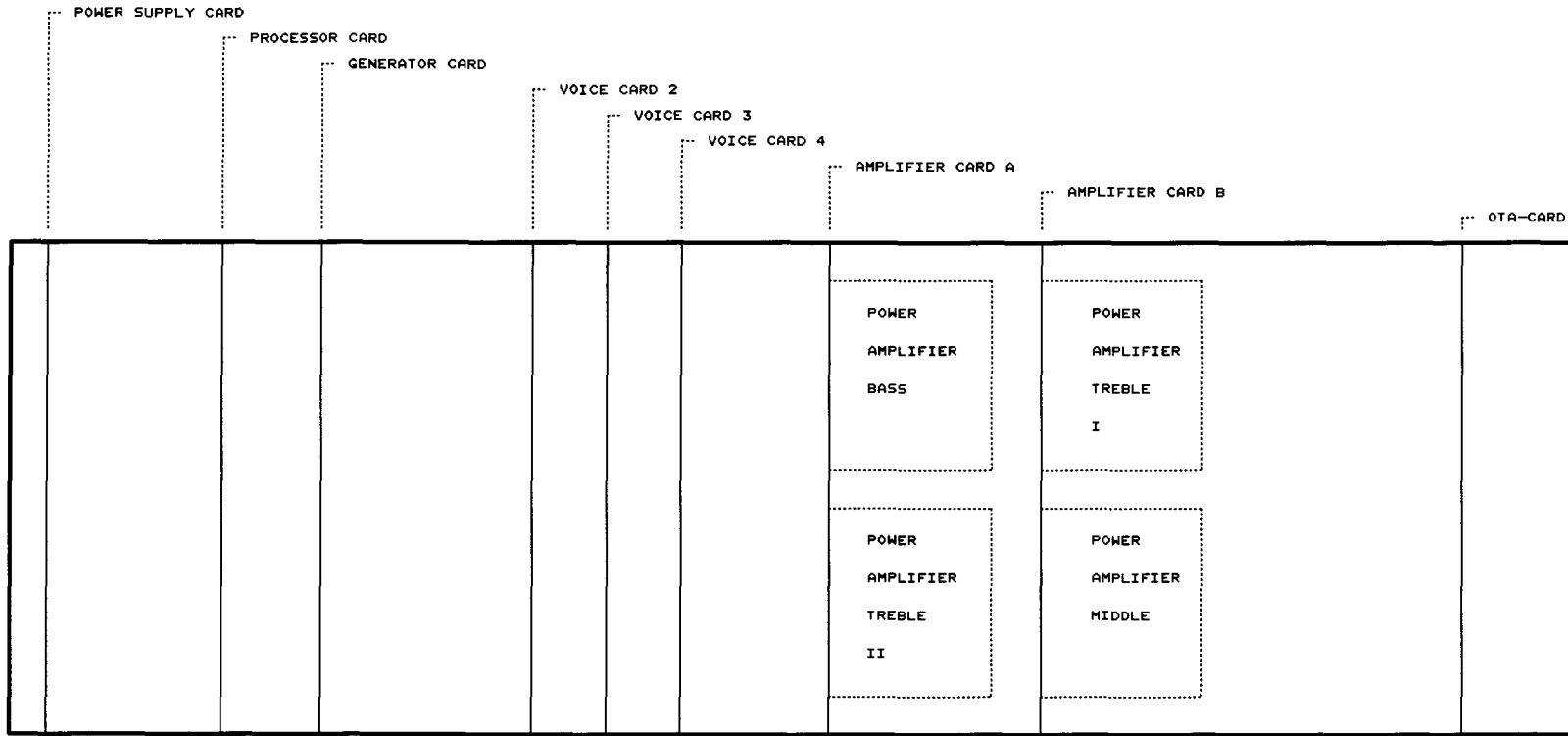
WESLEY Organs b.v.

Morsestraat 28 - 6716 AH Ede - Tel. (08380) 37403 - Fax (08380) 22238

C O N T E N T S

1. BLOCK DIAGRAM
2. POSITION DIAGRAM CARDS (TOPVIEW) &
EXTERNAL CONNECTIONS (mounted on the
rearside of the organ)
3. PINNING BUS CARD CONNECTORS
4. TRANSFORMER CONNECTIONS & POWER SUPPLY
5. SCANNING KEYING & TRANSPOSER
6. STOP-BANK & SWITCH-BANK CAPTURE SYSTEM
7. CAPTURE SYSTEM
8. PROCESSOR CARD
9. GENERATOR CARD
10. VOICE CARD
11. VOLUMECONTROLS; HEADPHONES CONNECTIONS &
ECHO INTERFACE (ota card)
12. EXPRESSION PEDAL CIRCUIT (ota card)
13. AMPLIFIER CARD
14. POSITION DIAGRAM ADJUSTMENTS
INTERNAL POTENTIOMETERS





← COMPONENT SIDE

1. NOT CONNECTED
2. NOT CONNECTED
3. NOT CONNECTED
4. +5V MIDI IN
5. MIDI IN



MIDI IN

1. NOT CONNECTED
2. NOT CONNECTED
3. NOT CONNECTED
4. +5V MIDI THRU
5. MIDI THRU



MIDI THRU

1. NOT CONNECTED
2. NOT CONNECTED
3. NOT CONNECTED
4. +5V MIDI OUT
5. MIDI OUT



MIDI OUT

SOLDERING SIDE VIEW

1. AK-4 OUT CHANNEL A
2. GROUND
3. NOT CONNECTED
4. AK-4 OUT CHANNEL B
5. NOT CONNECTED



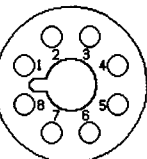
AK-4 OUT

1. AUX OUT CHANNEL A
2. GROUND
3. AUX IN CHANNEL A
4. AUX OUT CHANNEL B
5. AUX IN CHANNEL B



AUX IN/OUT

1. - BASS AMPLIFIER
2. + BASS AMPLIFIER
3. - MIDDLE AMPLIFIER
4. + MIDDLE AMPLIFIER
5. - TREBLE I AMPLIFIER
6. + TREBLE I AMPLIFIER
7. - TREBLE II AMPLIFIER
8. + TREBLE II AMPLIFIER

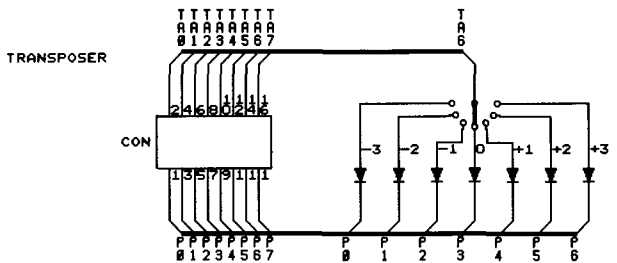
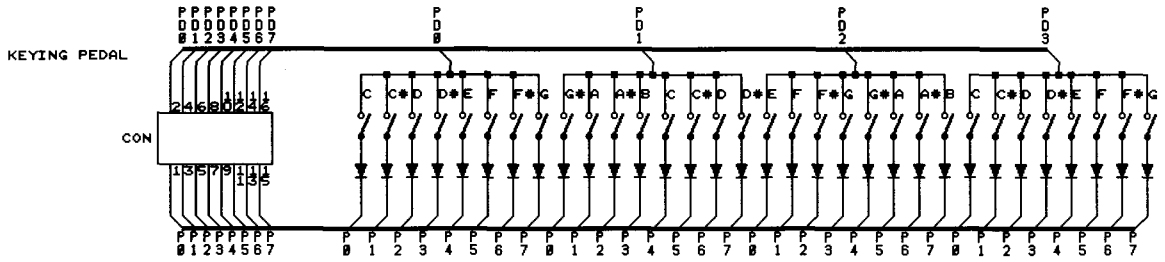
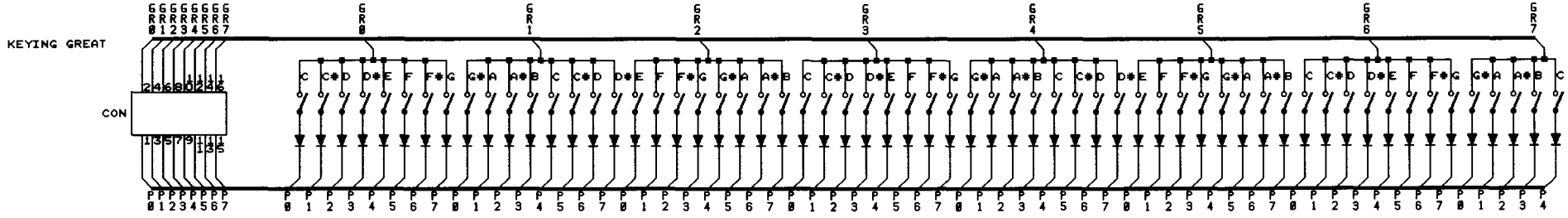
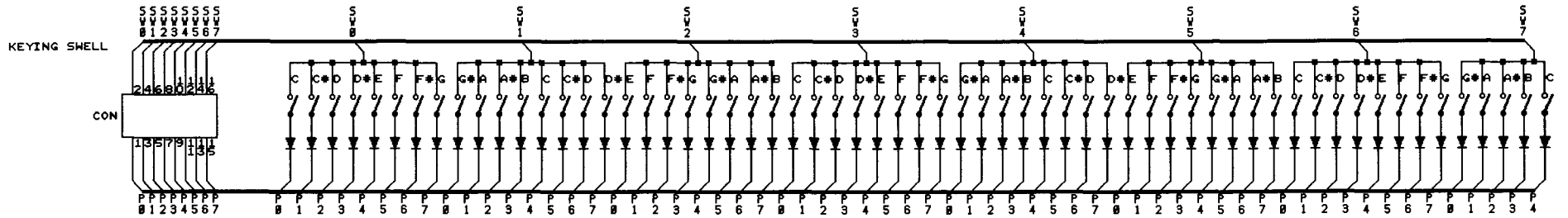


(OPTIONAL)

POSITION DIAGRAM CARDS (TOPVIEW) & EXTERNAL CONNECTIONS (mounted on the reverse side of the organ)

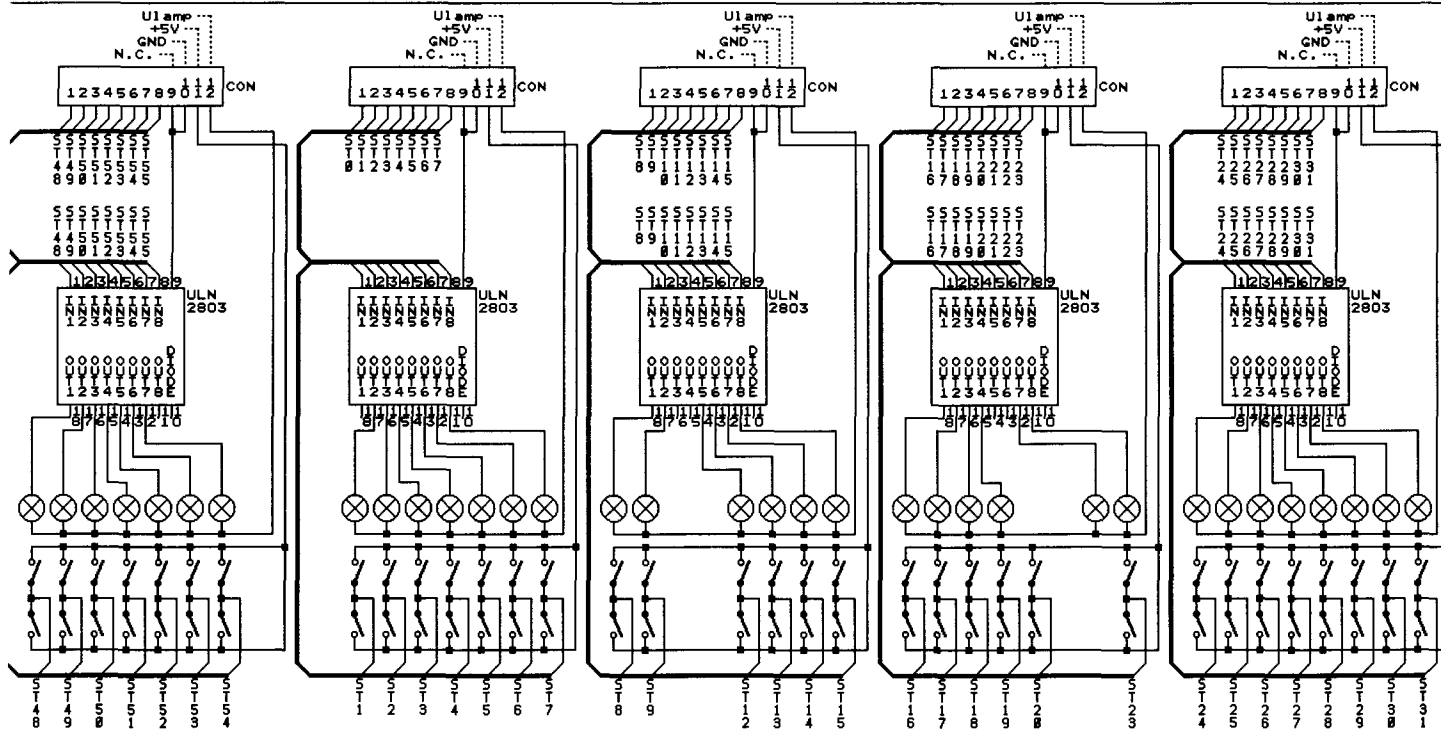
DESIGN	LAB	REV.
DRAWN	VERSCHOOR	21-08-92
WESLEY MODERATO		PAGE 2

CON1	CON2	CON3	CON4-5	CON6-B	CON9-10	CON11	CON12
018	018	018	018	018	018	018	018
020	020	020	020	020	020	020	020
030	030	030	030	030	030	030	030
040	040	040	040	040	040	040	040
+12V	+12V	+12V	+12V	+12V	+12V	+12V	+12V
-12V	-12V	-12V	-12V	-12V	-12V	-12V	-12V
AGND	AGND	AGND	AGND	AGND	AGND	AGND	AGND
070	070	070	070	070	070	070	070
080	080	080	080	080	080	080	080
090	090	090	090	090	090	090	090
+35V	+35V	+35V	+35V	+35V	+35V	+35V	+35V
-35V	-35V	-35V	-35V	-35V	-35V	-35V	-35V
010	010	010	010	010	010	010	010
0120	0120	0120	0120	0120	0120	0120	0120
0130	0130	0130	0130	0130	0130	0130	0130
0140	0140	0140	0140	0140	0140	0140	0140
0150	0150	0150	0150	0150	0150	0150	0150
0160	0160	0160	0160	0160	0160	0160	0160
0170	0170	0170	0170	0170	0170	0170	0170
0180	0180	0180	0180	0180	0180	0180	0180
0190	0190	0190	0190	0190	0190	0190	0190
0200	0200	0200	0200	0200	0200	0200	0200
0210	0210	0210	0210	0210	0210	0210	0210
0220	0220	0220	0220	0220	0220	0220	0220
0230	0230	0230	0230	0230	0230	0230	0230
0240	0240	0240	0240	0240	0240	0240	0240
0250	0250	0250	0250	0250	0250	0250	0250
0260	0260	0260	0260	0260	0260	0260	0260
0270	0270	0270	0270	0270	0270	0270	0270
0280	0280	0280	0280	0280	0280	0280	0280
0290	0290	0290	0290	0290	0290	0290	0290
0300	0300	0300	0300	0300	0300	0300	0300
0310	0310	0310	0310	0310	0310	0310	0310
0320	0320	0320	0320	0320	0320	0320	0320
POWER SUPPLY CARD	PROCESSOR CARD	GENERATOR CARD	VOICE CARD 1-2	VOICE CARD 3-5	AMPLIFIER CARD A & B	AMPLIFIER CARD C	OTA CARD

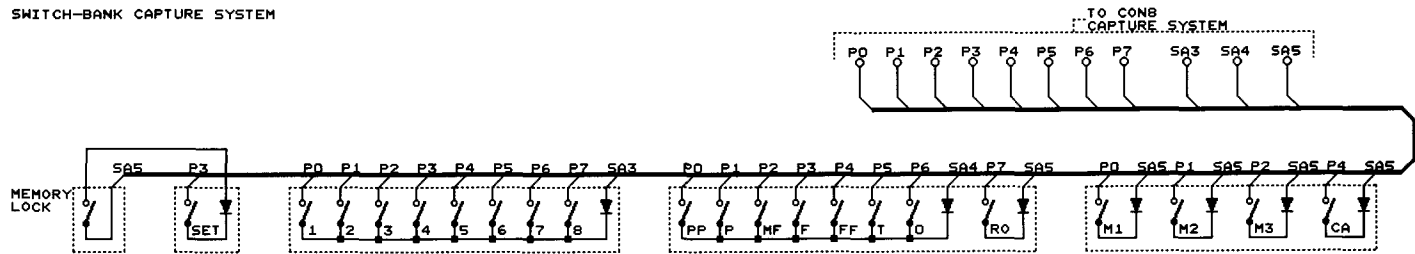


ALL CONNECTORS: TO PROCESSOR CARD
 ALL DIODES: 1N4148

SCANNING KEYING & TRANSPOSER		
DESIGN	LAB	REV.
DRÄHN	VERSCHOOR	21-08-92
WESLEY MODERATO		PAGE 5



SWITCH-BANK CAPTURE SYSTEM



STOPLIST

ACCESSORIES
 ST48 = SWELL TO GREAT
 ST49 = GREAT TO PEDAL
 ST50 = SWELL TO PEDAL
 ST51 = TREMLANT GREAT
 ST52 = TREMLANT SWELL
 ST53 = CHORUS
 ST54 = MANUAL BASS

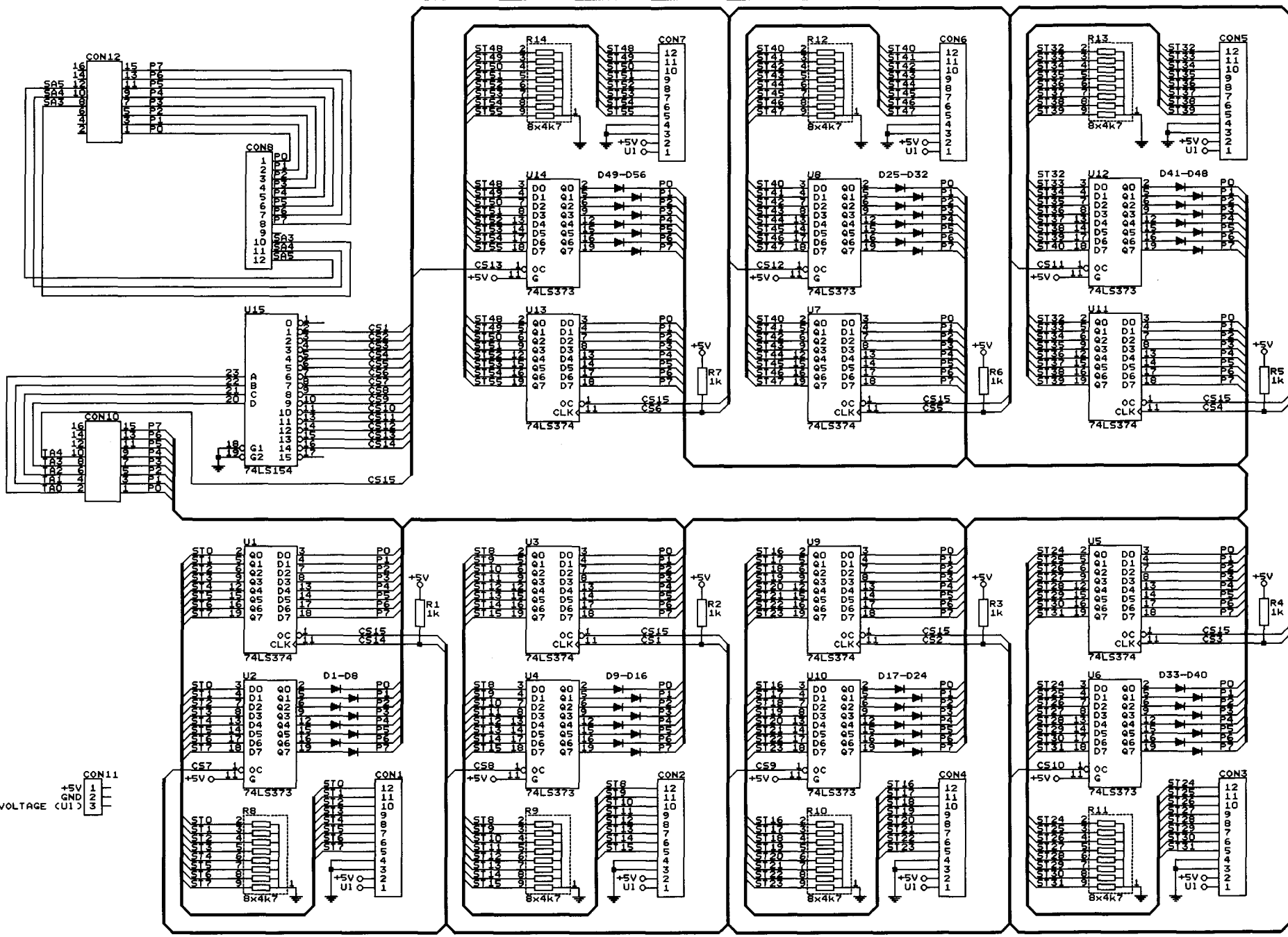
PEDAL
 ST1 = PRINCIPAL 16'
 ST2 = SUBBASS 16'
 ST3 = OCTAVE 8'
 ST4 = GEDACKT 8'
 ST5 = OPEN FLUTE 4'
 ST6 = MIXTURE III
 ST7 = BOHARDON 16'
 ST8 = CLARION 8'
 ST9 = MIDI TO PEDAL (CHAN. 3)

GREAT
 ST12 = DIAPASON 8'
 ST13 = ROHRFLUTE 8'
 ST14 = PRINCIPAL 4'
 ST15 = TWELFTH 2 2/3'
 ST16 = OCTAVE 2'
 ST17 = CORNET IV
 ST18 = MIXTURE II-IV
 ST19 = TRUMPET 8'
 ST20 = MIDI TO GREAT (CHAN. 1)

SWELL
 ST23 = BOURDON 16'
 ST24 = HOHLFLUTE 8'
 ST25 = GAMBA 8'
 ST26 = CELESTE 8'
 ST27 = HALDFLUTE 4'
 ST28 = CONICAL FLUTE 2'
 ST29 = NAZARD 1 1/3'
 ST30 = CROMORNE 8'
 ST31 = MIDI TO SWELL (CHAN. 2)

ALL CONNECTORS: TO CAPTURE SYSTEM
 ALL STOPLAMPS: 14Vdc/75mA

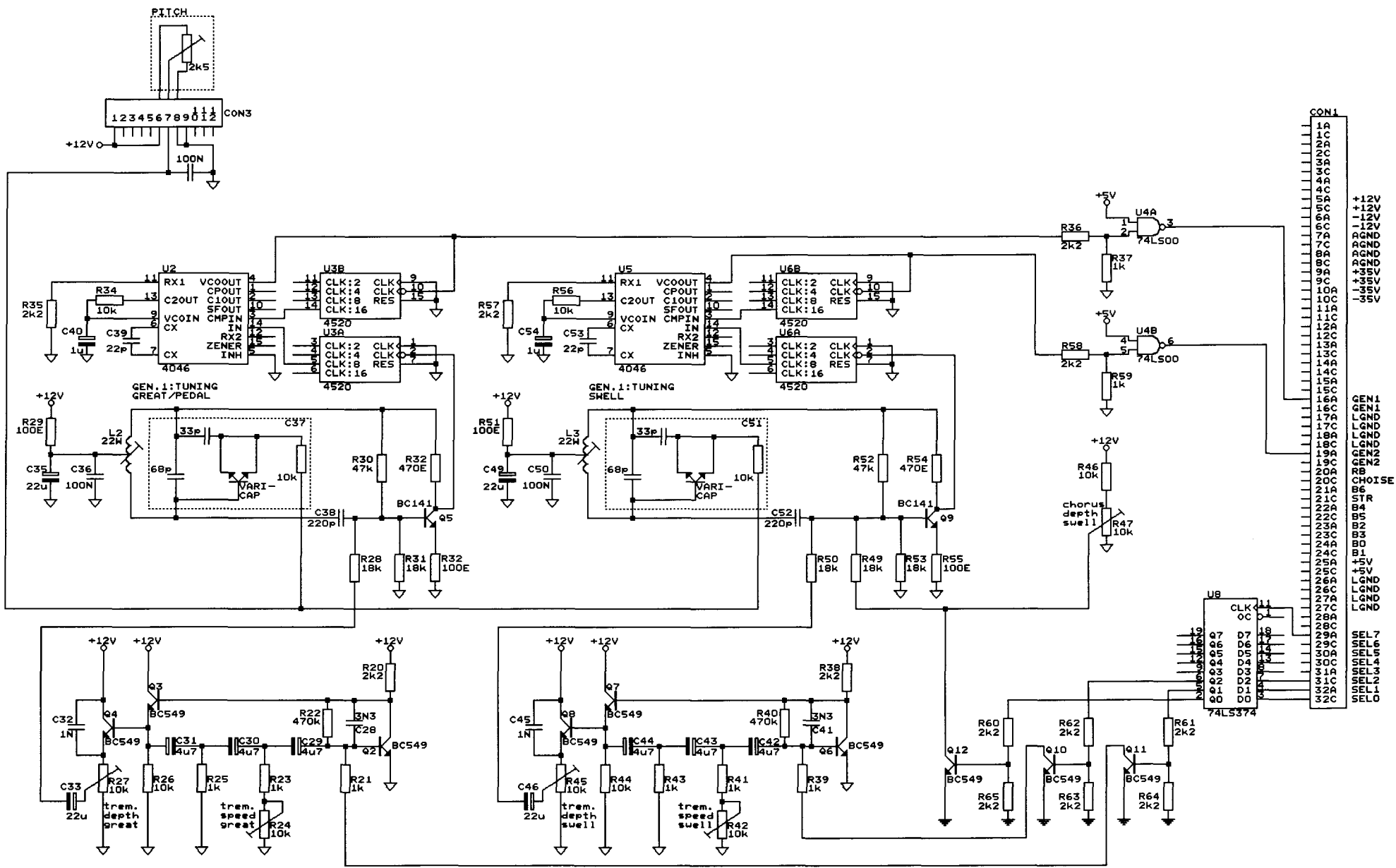
STOP-BANK AND SWITCH-BANK CAPTURE SYSTEM			
DESIGN	LAB		REV.
DRAHN	VERECHOOR	21-08-92	
WESLEY MODERATO			PAGE 6

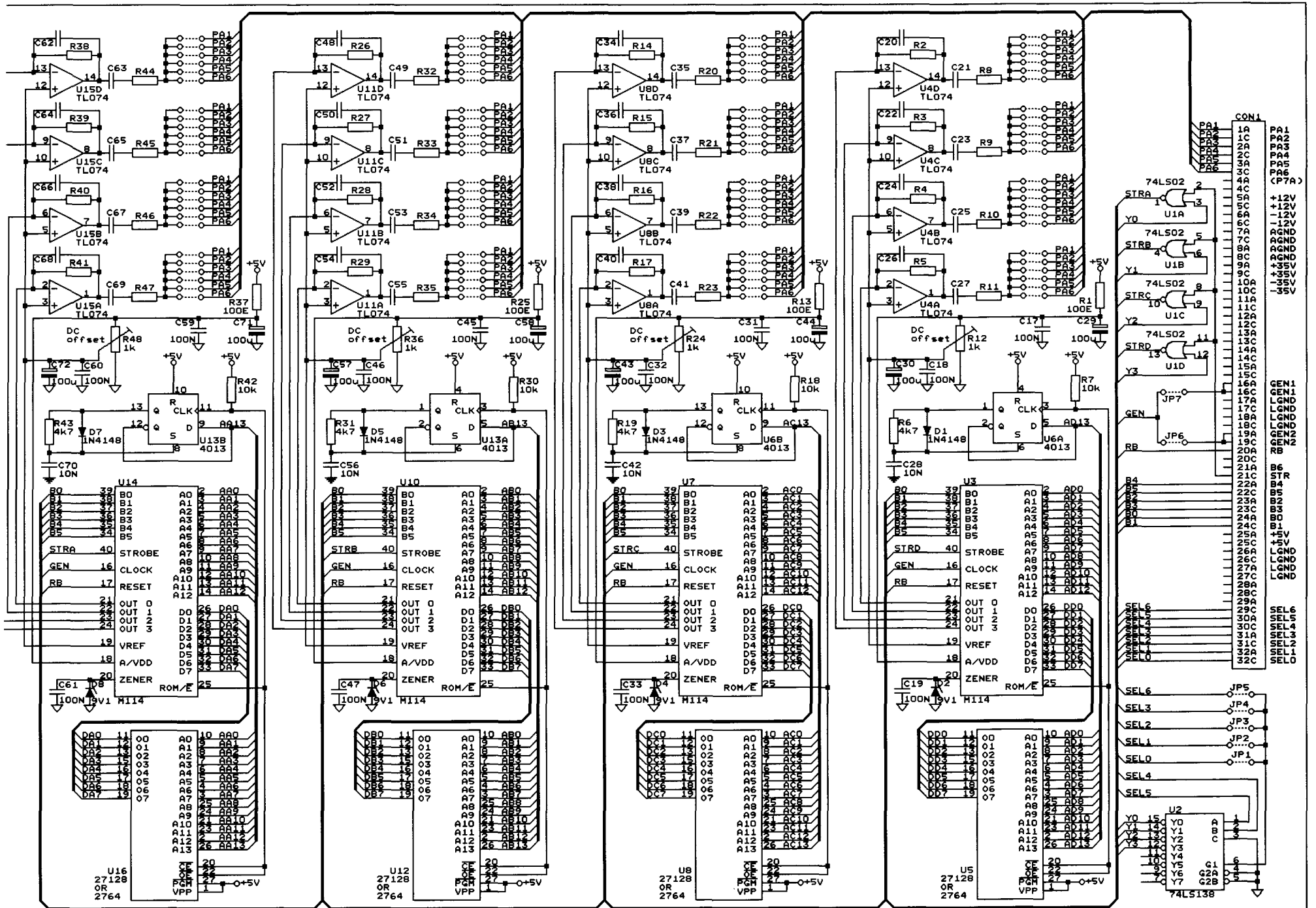


STOPLAMP VOLTAGE (U1)
 +5V
 GND
 U1

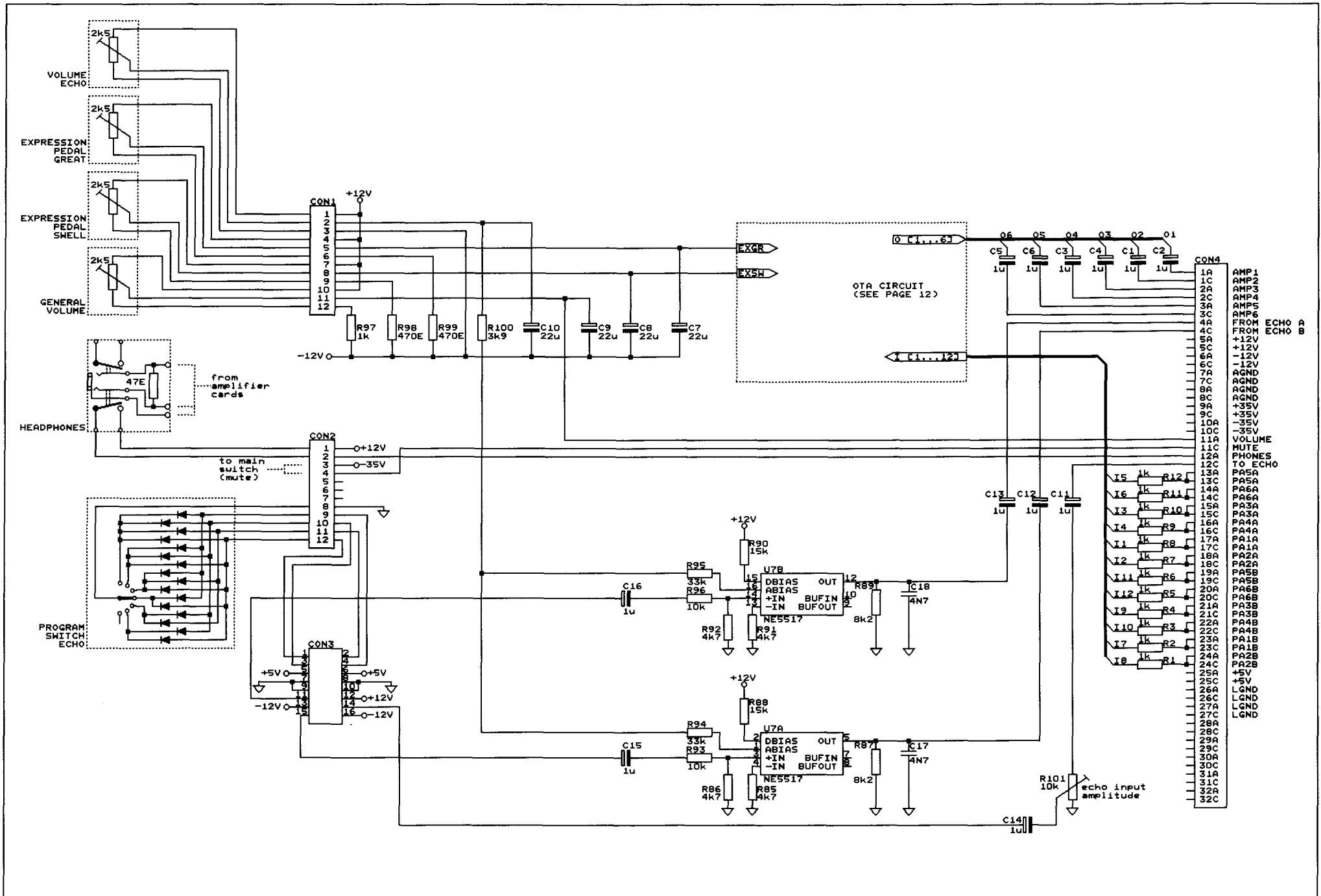
ALL DIODES: 1N4148

CAPTURE SYSTEM			REV.
DESIGN	LAB		
DRAWN	VERSCHOOR	21-08-92	
WESLEY MODERATO			PAGE 7





NOTE: IF FOR U5, U8, U12 OR U16 A 2764 EPROM IS PLACED INSTEAD OF A 27128 EPROM, THE 1/2 4013 (U6 AND U13) USED FOR SWITCHING THE UPPER 8K ROM AND THE LOWER 8K ROM, IS NOT NECESSARY.



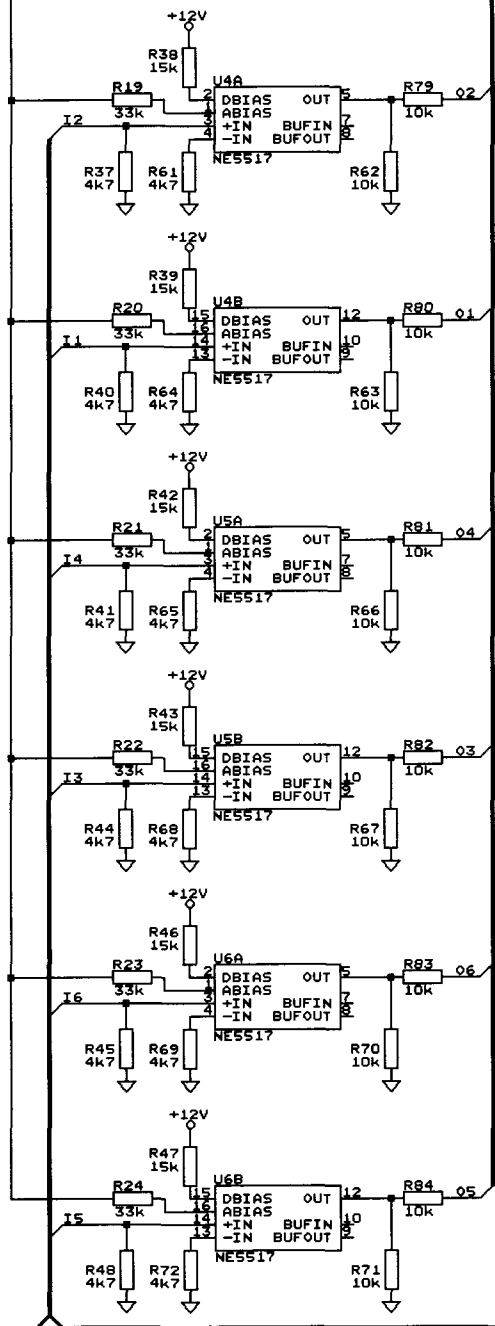
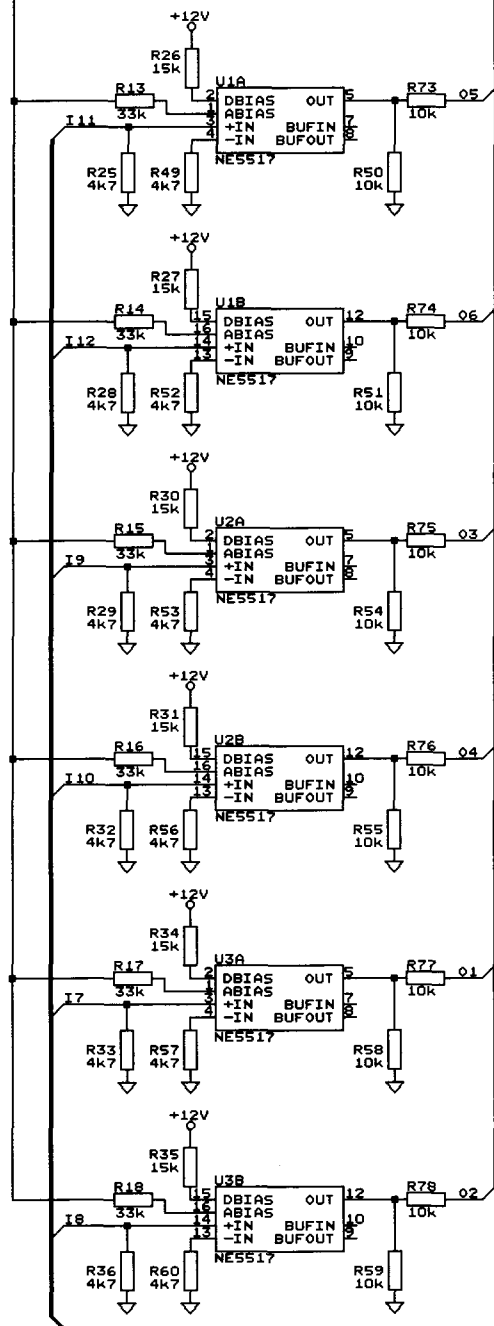
VOLUME CONTROLS; HEADPHONES CONNECTIONS & ECHO INTERFACE (ota card)

DESIGN	LAB		REV.
DRAWN	VERSCHOOR	21-08-92	PAGE 11
WESLEY MODERATO			

EXGR

EXSH

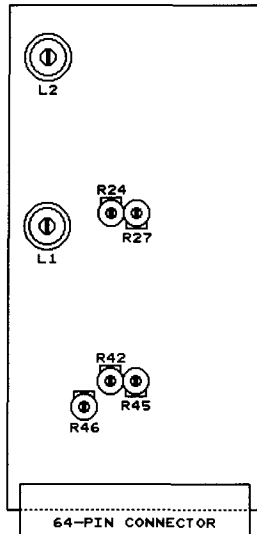
01...67



11...127

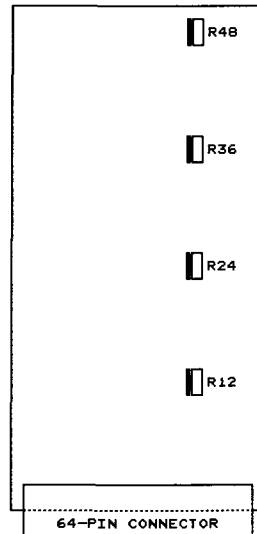
EXPRESSION PEDAL CIRCUIT (ota card)			
DESIGN	LAB		REV.
DRAWN	VERSCHOOR	21-08-92	PAGE
WESLEY MODERATO			12

GENERATOR CARD
(COMPONENT-SIDE VIEW)



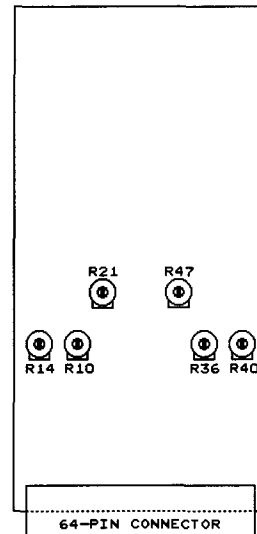
- L1 = TUNING SWELL
- L2 = TUNING GREAT
- R24 = TREMLANT SPEED GREAT
- R27 = TREMLANT DEPTH GREAT
- R42 = TREMLANT SPEED SWELL
- R45 = TREMLANT DEPTH SWELL
- R46 = INTENSITY CHORUS EFFECT

VOICE CARD
(COMPONENT-SIDE VIEW)



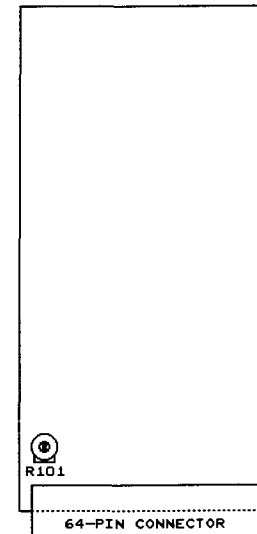
- R12 = DC-OFFSET VOICE D
(DISTORSION VOICE D)
 - R24 = DC-OFFSET VOICE C
(DISTORSION VOICE C)
 - R36 = DC-OFFSET VOICE B
(DISTORSION VOICE B)
 - R48 = DC-OFFSET VOICE A
(DISTORSION VOICE A)
- NOTE: R12-R24-R36-R48 ARE NOT
FOR CHANGING VOLUMES!!
TURNING THESE POTENTIOMETERS
WILL GIVE DISTORSION!!

AMPLIFIER CARD
(COMPONENT-SIDE VIEW)



- R10 = BASS LEFT AMPLIFIER
- R14 = TREBLE LEFT AMPLIFIER
- R21 = VOLUME LEFT AMPLIFIER
- R36 = BASS RIGHT AMPLIFIER
- R40 = TREBLE RIGHT AMPLIFIER
- R47 = VOLUME RIGHT AMPLIFIER

OTA CARD
(COMPONENT-SIDE VIEW)



- R101 = INPUT AMPLITUDE ECHO